

## Comfortable driving

- ◆ The 3rd generation of hexahedron ROPS/FOPS cab with ultimate vision and 360° non-blind-area design;
- ◆ 5.8kW high-power cooling and heating air conditioner, three-dimensional air duct layout. At 38℃, the temperature of driving environment can be reduced to 23℃ in 30 minutes;
- ◆ The fully sealed 76dB(A) silent cab minimizes dust entry and provides a quiet and comfortable driving environment;
- ◆ Grammer shock-absorbing seat with headrest and spacious backrest, with mechanical suspension structure, brings maximum support for long-time driving and reduces fatigue.



## Reliable and durable

- ◆ Design standard for mining platform, intelligent manufacturing in lighthouse factory, service life of structural parts >30000h;
- ◆ The 3rd generation of reinforced rear axle, with large wheel-hub bearing and waterwheel lubrication structure, reinforced slewing bearing and chain, NO-SPIN silent differential lock, has a service life increased by 50%;
- ◆ The fully-enclosed rolling disc operating device adapts to sand and gravel, with high slewing accuracy, no need for frequent maintenance, no wearing parts, and a service life >10000h.

C10S Series



SANY HEAVY INDUSTRY CO., LTD.

Sany Industrial City, Changsha Economic and Technological Development Zone, Hunan Province, China  
Zip: 410100  
Fax: 0086-731-85835199 Enquiry and Complaint Telephone: 0086-4006098318

Warm reminder:  
As the technology is constantly updated, technical parameters and configurations are subject to change without prior notice.  
The machine on the picture may include additional equipment, this album is for reference only, subject to the actual.  
The copyright belongs to SANY Heavy Industry, and no part of this catalog may be reproduced or copied for any purpose without SANY Heavy Industry's written permission.

© China print Apr. 2025 edition



Scan the QR code to follow  
the WeChat Official Account of  
SANY Road Machinery

V 20250409

SANY®



## SPECIFICATION



Grader  
STG230C-10S  
Euro V

QUALITY CHANGES THE WORLD  
www.sanyglobal.com

## Product Highlights

### Extreme control

- ◆ Load-sensing hydraulic system with flow distributed as required, supporting synchronous operation of multiple handles, less heating and low energy consumption;
- ◆ The operating force of the handle is <20N. It is labor-saving in operation and realizes accurate control;
- ◆ One-click landing of blade, dead weight floating, light steering system, blade buffer floating (optional), efficient and reliable snow removal and mine road maintenance.

### Efficient and energy-saving

- ◆ Low-speed, large-torque heavy-duty power, and three-stage air filter and three-stage fuel filter matched with accurate fuel injection technology ensure excellent performance and low emission;
- ◆ Optimal matching power transmission system realizes the best matching of traction and operation speed, with the operation efficiency 10% higher than that of similar products in the industry;
- ◆ With power adaptive intelligent matching technology, the customized power curve can automatically match different working gears. Cruise control and ECO modes can be set with one button to achieve maximum working efficiency and minimum fuel consumption.



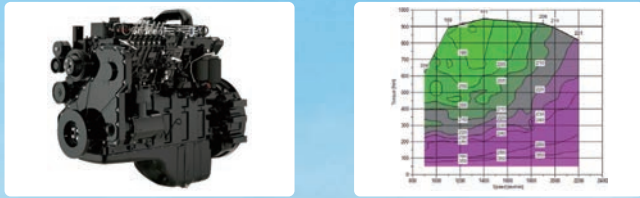


STG230C-10S

Grader  
C10S Series

### Power adaptive intelligent matching technology

- ◆ The customized power curve is automatically matched with different working gears to reduce operating fuel consumption.
- ◆ The ECO mode can be selected with one button according to the working conditions, so as to achieve maximum working efficiency and minimum fuel consumption.



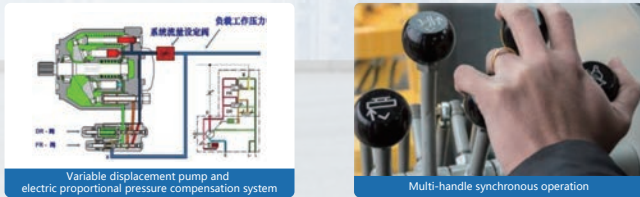
### 3<sup>rd</sup> generation reinforced slewing bearing/drive axle

- ◆ Reinforced 3–seal slewing bearing (patented), with a maintenance period of > 1000h;
- ◆ Extended wheel–hub bearing, waterwheel lubrication structure (patent), reinforced chain and NO–SPIN silent differential lock increase the service life by 50%.



### Load sensing hydraulic system (PPPC)

- ◆ 107 displacement variable displacement pump and electric proportional pressure compensation multi–way valve ensure that the flow, pressure and power demand are equipped as required. The hydraulic system features less heating and low energy consumption.
- ◆ The operating force of the handle is < 20N. It is accurate in control and can realize multi–handle synchronous operation.



### Fully–enclosed rolling disc heavy–duty operating device

- ◆ The fully–enclosed rolling disc operating device adapts to sand and gravel, with high slewing accuracy. It has a grease filling cycle of 200 ~ 300h, without wearing parts, and its service life is > 10000h.
- ◆ Four–link swing frame, long blade extension distance, versatile in operation, 505mm lifting height, excellent trafficability.



### Quiet and comfortable driving

- ◆ The 3rd generation of 76dB(A) ultimate–vision ROPS/FOPS hexahedron cab, with 360° non–blind–area design and optimal sealing performance in the industry, minimizes dust entry and provides a quiet comfortable driving environment.
- ◆ 5.8kW high–power cooling and heating air conditioner, three–dimensional air duct layout. At 38℃, the temperature of driving environment can be reduced to 23℃ in 30 minutes.
- ◆ Grammer shock–absorbing seat with headrest and spacious backrest, with mechanical suspension structure, brings maximum support for long–time driving and reduces fatigue.
- ◆ Luxury interior, left and right push windows, radio, cab fan, USB charging, storage box, etc.



### 3<sup>rd</sup> generation intelligent display and control system

- ◆ 7–inch touch screen, thin film buttons and integrated reversing camera are available in seven languages: Chinese, Russian, English, French, Spanish, Portuguese and Indonesian.
- ◆ Intelligent cloud system, real–time monitoring of complete machine status, intuitive and automatic prompt for fault self–diagnosis and regular maintenance.



### Product Optional

Module	Standard	Optional/additional
Engine	SDEC 177kW Euro V	/
Gearbox	ZF 6WG–200	/
Rear axle	Reinforced: disc brake + single–row slewing bearing + high–strength chain	Special mine type: wet brake + double–row slewing bearing + reinforced chain
Air filter system	Standard type	Desert type (oil bath)
Cab	Ultimate vision hexahedron (including beacon light)	/
Seat	Grammer mechanical suspension type (including seat belt)	/
Swing frame	Four link (including electro–hydraulic bolt)	/
Worm wheel case	Overload protection	/
Blade	14ft (4270mm)	12ft (3660mm)
Cutting edge	Standard wear–resistant type	Mine wear–resistant type
Wheel	17.5–25(tubed)	Desert type (vacuum tire)
Wheel fender	Rear wheel fender	/
Operating tools	/	Front dozer plate / front ripper rake / rear ripper
Intelligent blade	Snow removal scenario: one–click cutting + dead weight floating	Mining scenario: automatic obstacle avoidance (buffer floating)

Notes:  
1. Standard operating mass includes standard configuration of 17.5–25 tires, full load fuel, coolant, lubricant and 75kg operator.  
2. Due to the continuous update of technology and products, parameters are subject to modification without notice.  
In case of any discrepancy between samples and physical objects, the physical object shall prevail.

### Service environment of product

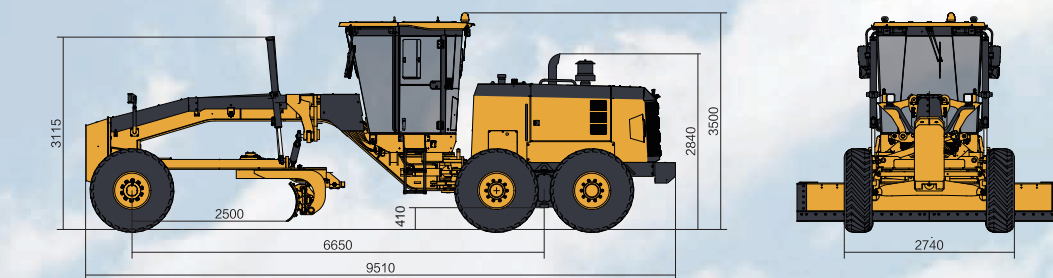
- ◆ Standard configuration: no intake preheating system + normal temperature battery, suitable for an ambient temperature of above –10℃ ;
- ◆ Intake preheating system + normal temperature battery are installed to meet an ambient temperature of above –20℃ ;
- ◆ If the ambient temperature is lower than –20℃ , please consult SANY technicians.



## Product Parameters

#### ◆ Overall Dimensions

The following are standard configuration measurements, and the physical items vary depending on the options.



Unit: mm

Item	STG230C-10S
Engine	SDEC SC7H Euro V
Rated power/speed (kW/rpm)	177/2200
Dimensions (mm)	Standard configuration: including front and rear counterweights 9510×2740×3500
	Addition: rear ripper 10350×2740×3500
	Addition: front dozer + rear ripper 11230×2740×3500
Operating mass (kg)	Standard configuration: including front and rear counterweights 16800
	Addition: rear ripper 17400
	Addition: front dozer + rear ripper 185000
Forward speed (km/h)	6/10/13/21/27/42
Reverse speed (km/h)	6/13/27
Blade length × chord height (mm)	4270×620 (standard)
Maximum lifting height of blade (mm)	505
Fuel tank volume (L)	400
Hydraulic tank volume (L)	140